



Beyond Messaging: Interoperability in Action

2018 NCES STATS-DC Data Conference
Thursday, July 26, 2018

A person with long dark hair is seen from behind, sitting at a desk and looking at a computer monitor. The monitor displays a world map with the text "CONTINENTS AND OCEANS" at the top. The desk is cluttered with papers, a pen, and other office supplies. The entire scene is overlaid with a semi-transparent teal filter.

**Ed-Fi seamlessly and
securely connects
educational data
systems.**

Watch Video

Common Language

Ed-Fi surfaces all of your school's systems, tools, and software onto a single platform.

Know Everything

Ed-Fi finally delivers the comprehensive insights teachers need to deliver personalized learning.

Zero Fees

The Ed-Fi data standard is offered with no fees from Ed-Fi—making data integration affordable.

Secure & Protected

At every step, and at all moments, your data is safe and in your control.

Nonstop Improvement

An active community of educators and technologists advance Ed-Fi every day.

Teacher's Choice

Ed-Fi powers the finest technology on the market. Choose your favorite tools.

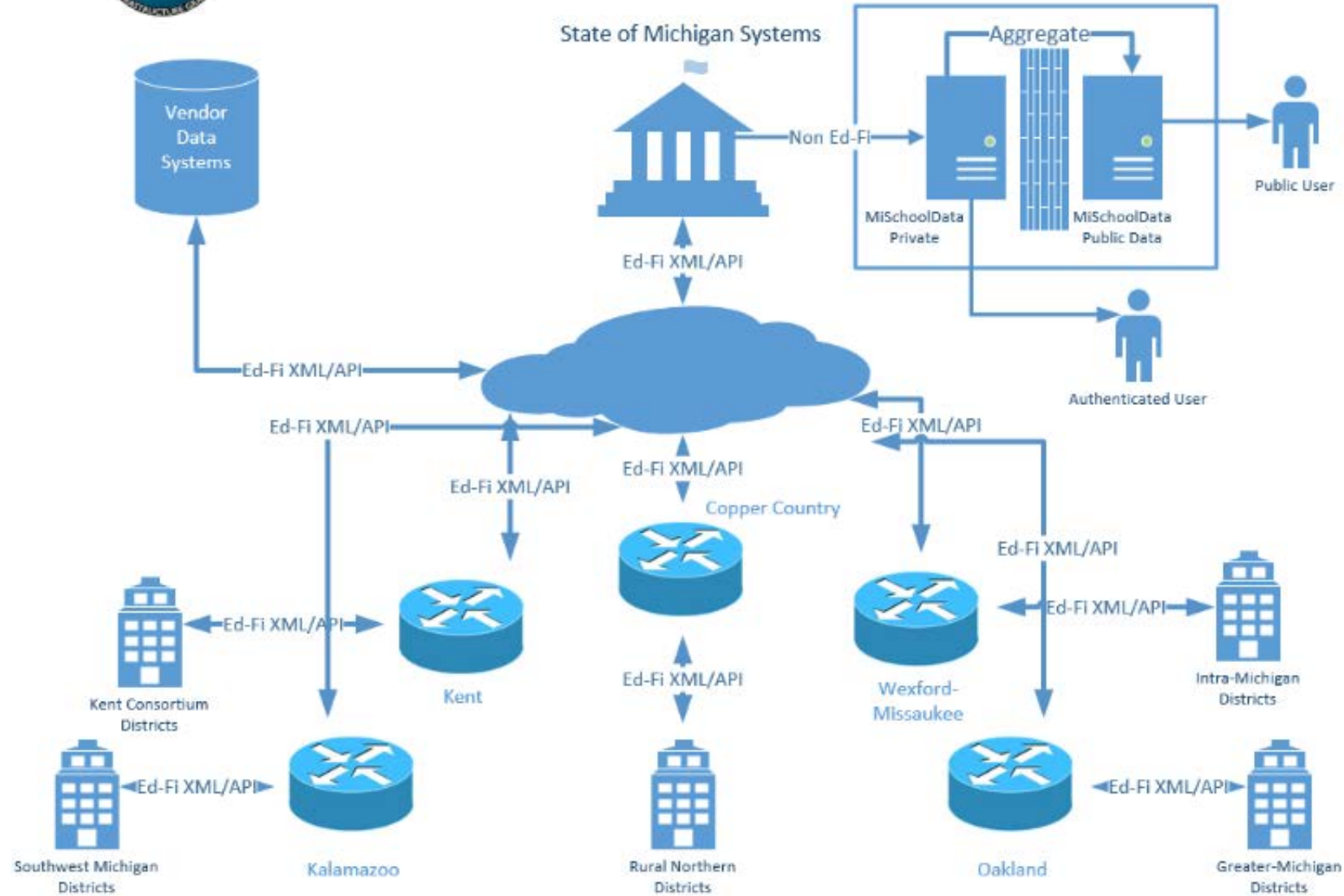
Michigan's Interoperability Story

- 57 Intermediate School Districts
- 900 Districts
- 3,427 Schools
- 1,532,335 Students





TRIG Data Integration – Connectivity Overview

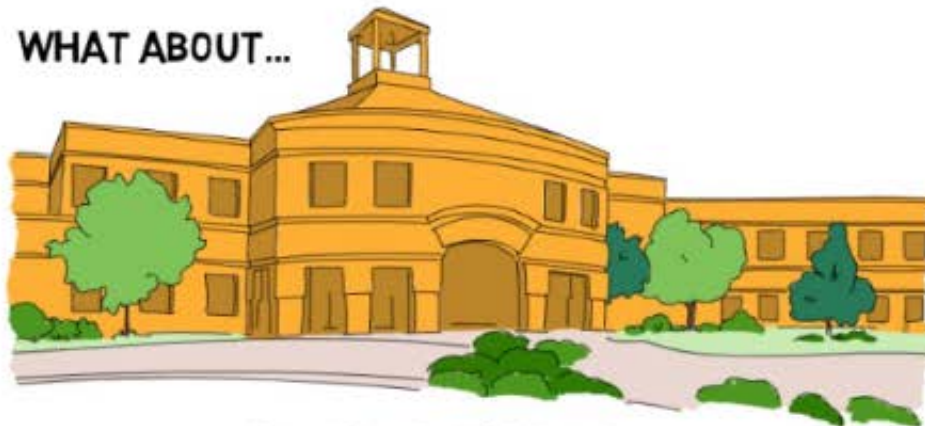


Mission: Streamline the use of educational information statewide



- Started with Technology Readiness Infrastructure Grant (TRIG)
 - Stated goal to address proliferation of systems
 - Challenged to reduce number of data systems to no more than 3-5 with 1 recommended as “state solution”
 - Funds granted to an ISD as a fiscal agent through MDE
- Recommended that we promote interoperability, so everything looked and worked like a single system
- Focus on district and school data needs

WHAT ABOUT...



YOUR SCHOOL



ARE YOU
FRUSTRATED
BY...

WOULD YOU LIKE
TO **HAVE...**

DELAYS IN **ACCESS**
TO STUDENT **RECORDS**

ACCURATE AND
CURRENT **DATA**

INABILITY TO MAKE
DATA INFORMED
DECISIONS

NO USERNAME
OR PASSWORD &

INACCURATE **DATA**

FOCUS **ENERGY** ON
STUDENT **SUCCESS**

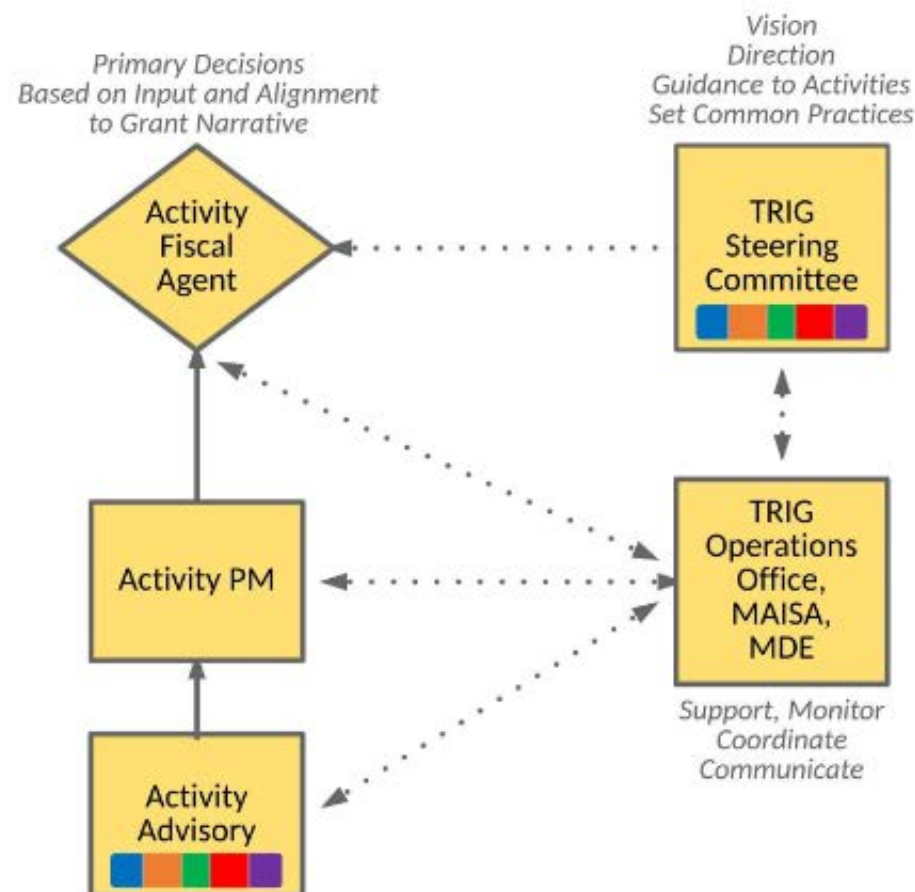


Collaborative Decision Making

- Advisory committee with 2 representatives per region - primarily ISD
- CEPI and MDE also represented



TRIG Input/Decision Flow



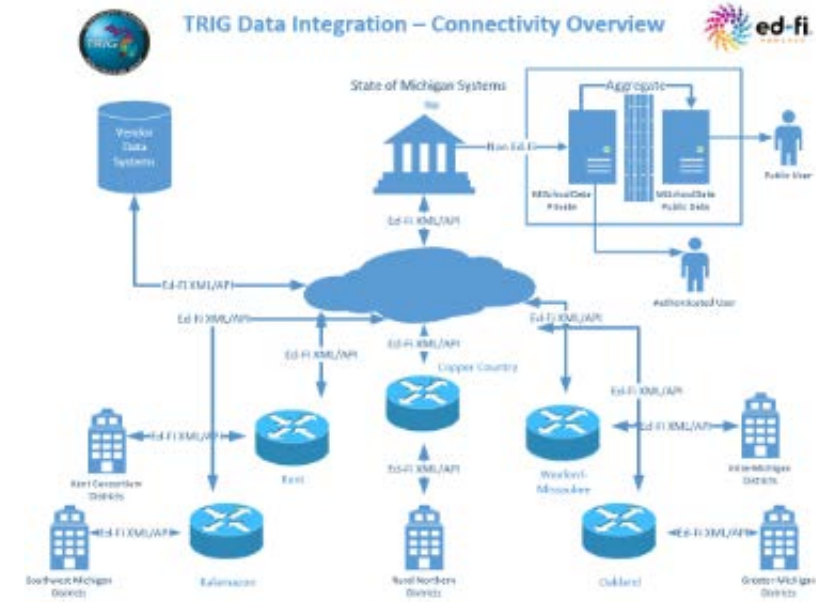
Local districts and ISDs are represented through consortia at the steering and advisory level for each statewide activity.

Key Stakeholders and Partnerships:

MDE, MAISA, MASA, LEAs, GELN, ISD Tech, MACUL, MAEDS, MSBO, MPAAA, MASSP, ASCD, MAC, DTMB, CEPI, MSIFN, etc.

Implementation

- 5 regional “data hubs” powered by Ed-Fi
- Cockpit application that allows for local control of interoperability
- Focused effort on SIS vendors initially
- Surveys identified most used systems
- Outreach to top vendors in each category
- State reporting extensions and alignment with statewide data needs
- Created a statewide support network
- ROI Study that indicated \$56M savings/yr



Successes

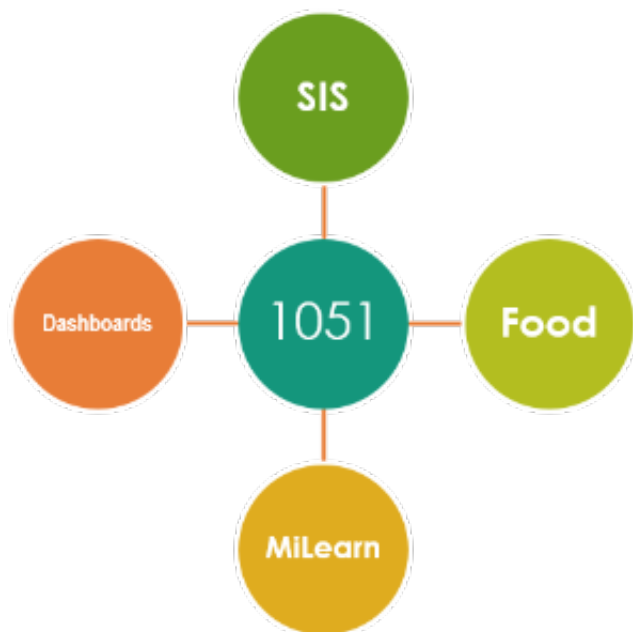
- Tremendous collaboration
- 6 SIS and 17 Additional Connected Systems
- MiLearn
- EWIMS/Ed-Fi Dashboards
- Continued legislative funding of \$2.2M per year
- Branded as Michigan Data Hub (MiDataHub)
- Animated video to tell the story
- MiRead and MiStrategyBank
- UIC/EEM/M-STEP Integration
- Statewide SSO
- OneRoster API on Ed-Fi ODS

Challenges

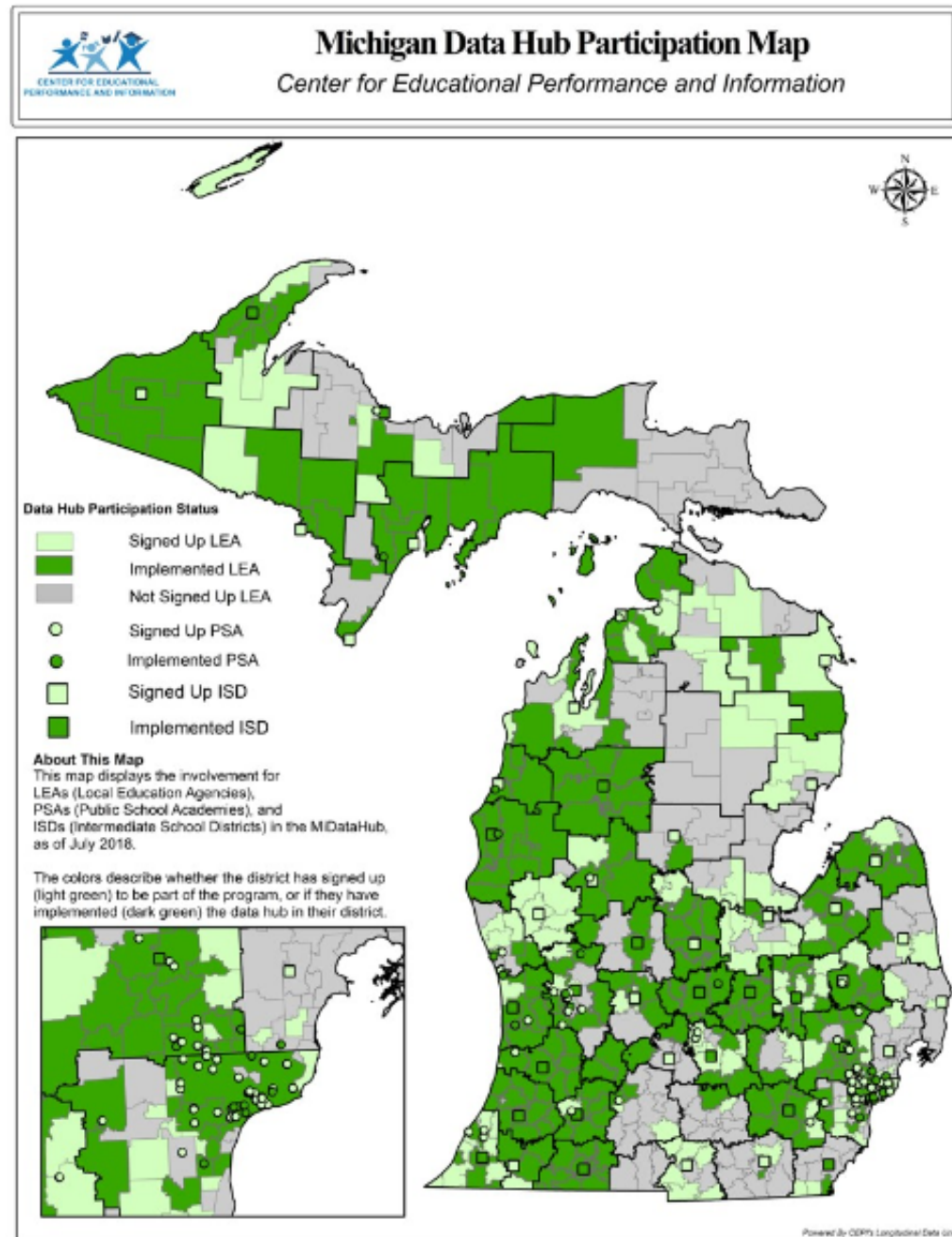
- Communication
- Vendor adoption
- District/ISD adoption
 - Waiting for others to go first
 - Competes with ISD offerings
 - Integrations already in place
- Legal agreements and data sharing concerns
- Establishing sustainability aside from state funding
- Capacity



| Live | In-Process | Total |
|---------|------------|-----------|
| 296 | 200 | 496 |
| 34% | 23% | 56% |
| 651,606 | 372,547 | 1,024,153 |
| 43% | 24% | 67% |



3.6
Systems Integrated
per District



Future - Culture Change

- 100% District Adoption by September 2020
- 100% School Data Systems Integrated
 - Includes Finance and HR/Payroll
- State Reporting and Increased State/District Data Sharing
- Actionable Data
- Extend reach of Single Sign-On



TURN **DATA** YOU HAVE INTO **INFORMATION** YOU CAN  **USE**

Nebraska's Interoperability Story

- 17 Educational Service Units
- 244 Districts
- 1,130 Schools
- 318,000 Students





BRIDGING CONNECTIONS

NSSRS TO ADVISED

The Road
to the Future



AQUESTT
for Nebraska

How Did We Get Here

Paper Forms



Web Forms



LOTS of Paper Forms

Wall of Shame

Mail mail mail

Data entry

Portal

Aggregate reports

Lack of detail



How Did We Get Here

Nebraska Student and Staff Record System (NSSRS)

- Student Level Data
- Templates
- File Uploads
- NSSRS validation website
- Improved data quality

NSSRS Timeline

- ❑ 2005-2006 Pilot
- ❑ 2006-2007 Parallel
- ❑ 2007-2008 LIVE!
- {10 years later}
- ❑ 2017-2018 Retirement





2012 SLDS Grant

NDE received a federal SLDS grant in 2012 to enhance our SLDS through: the development and implementation of a **data analysis tool for districts that uses multiple local and state data sources to produce reports for local decision-makers**, providing a statewide system of professional development training for data analysis to reach every district, building a research and evaluation operation in NDE, and ***expanding and enhancing the SLDS for sustainability.***



Ed-Fi

Ed-Fi securely and seamlessly connects educational data systems.



Funds the Ed-Fi Alliance



Pilot Phase

Engaged to help guide the development and Nebraska personalization of the Ed-Fi dashboard.

“Hey, if we are going to be sending you all this data for the dashboard, can’t you just use it for state reporting purposes???”





ADVISER

➤ Nebraska's implementation of Ed-Fi

A dvanced

D ata

V iews

I mproving

S tudent

E ducation

R esponse

ADVISER System

Data System

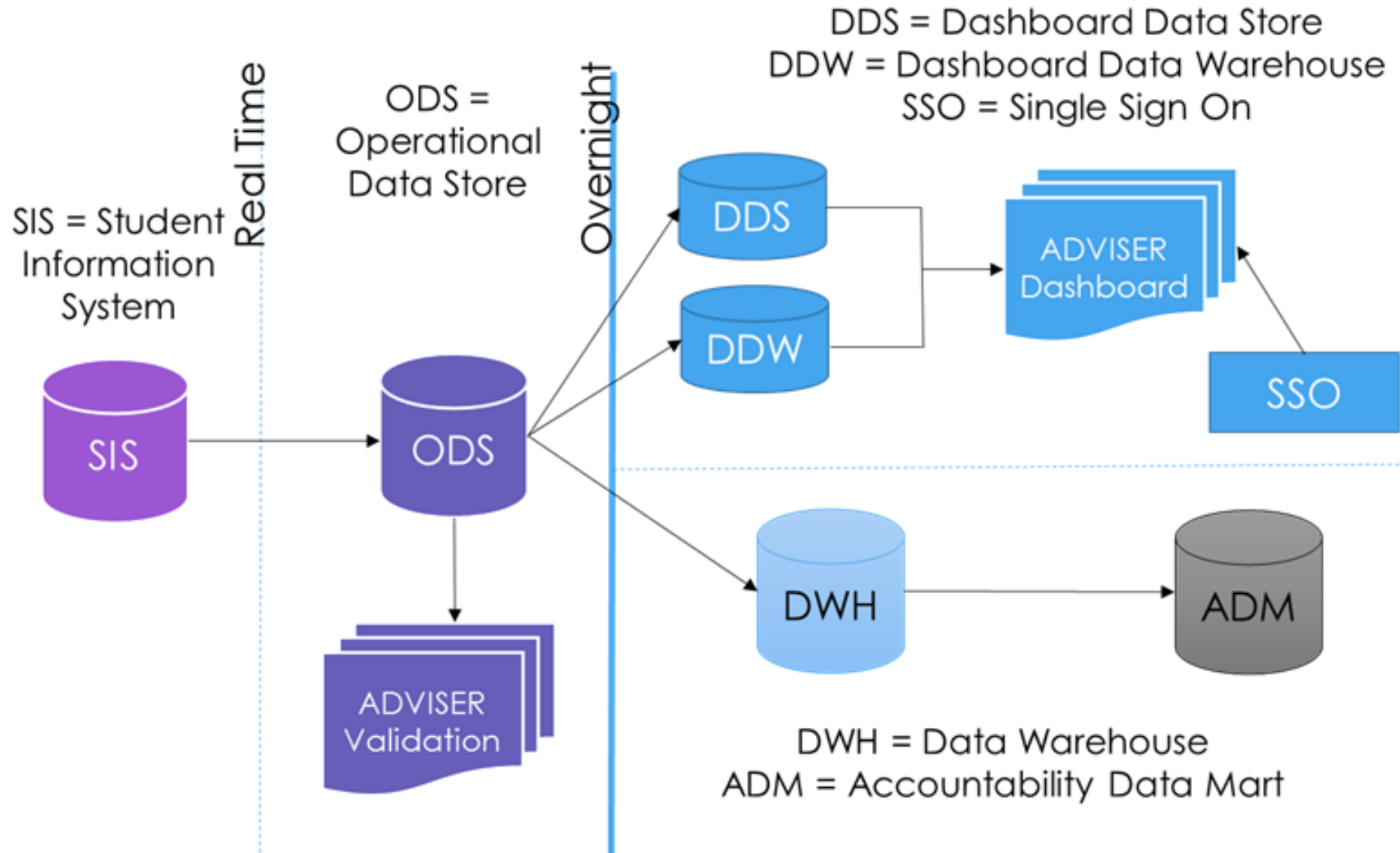
- SIS to ODS

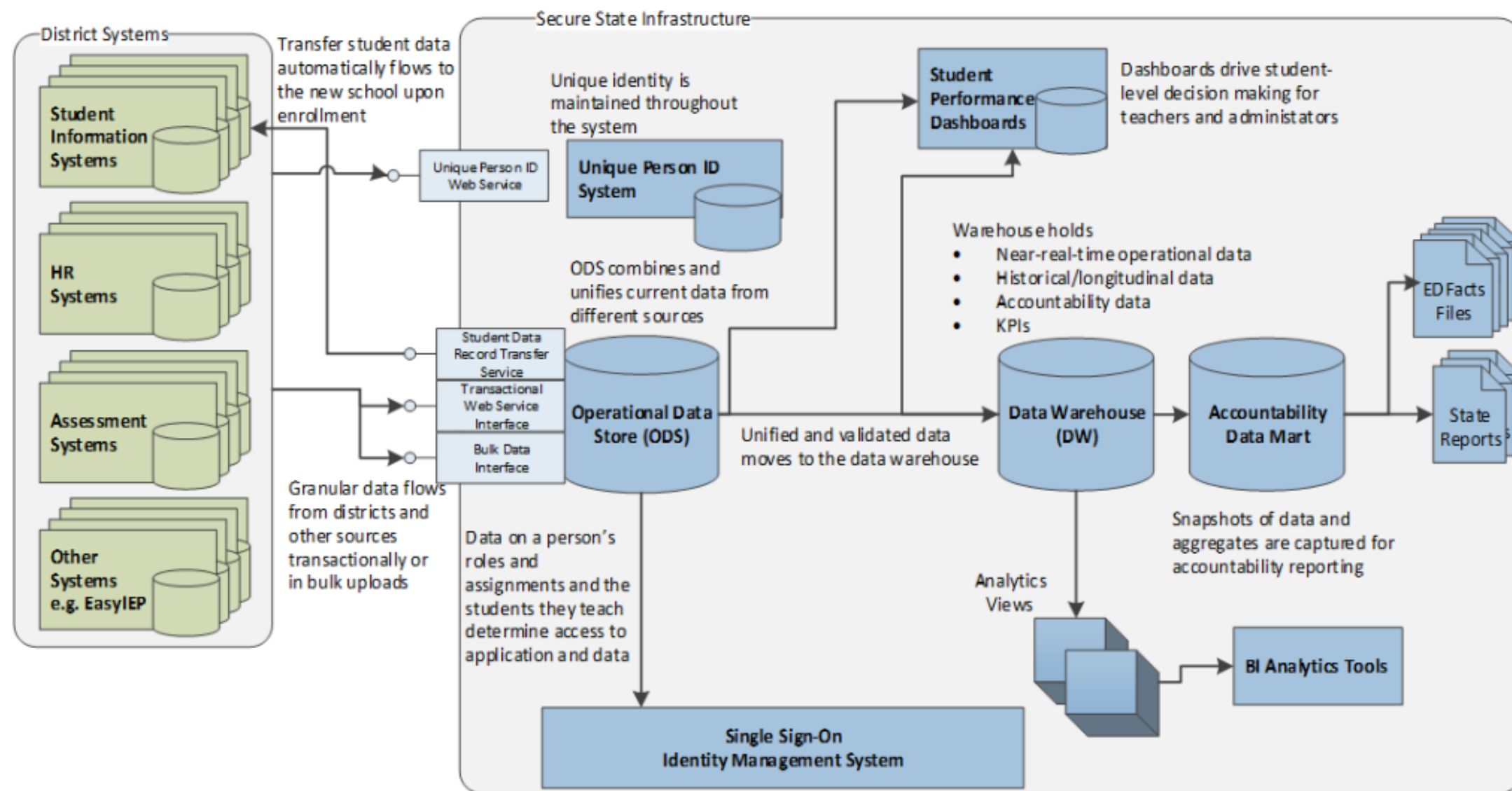
Dashboard

- District / School / Teacher



Technical Stuff

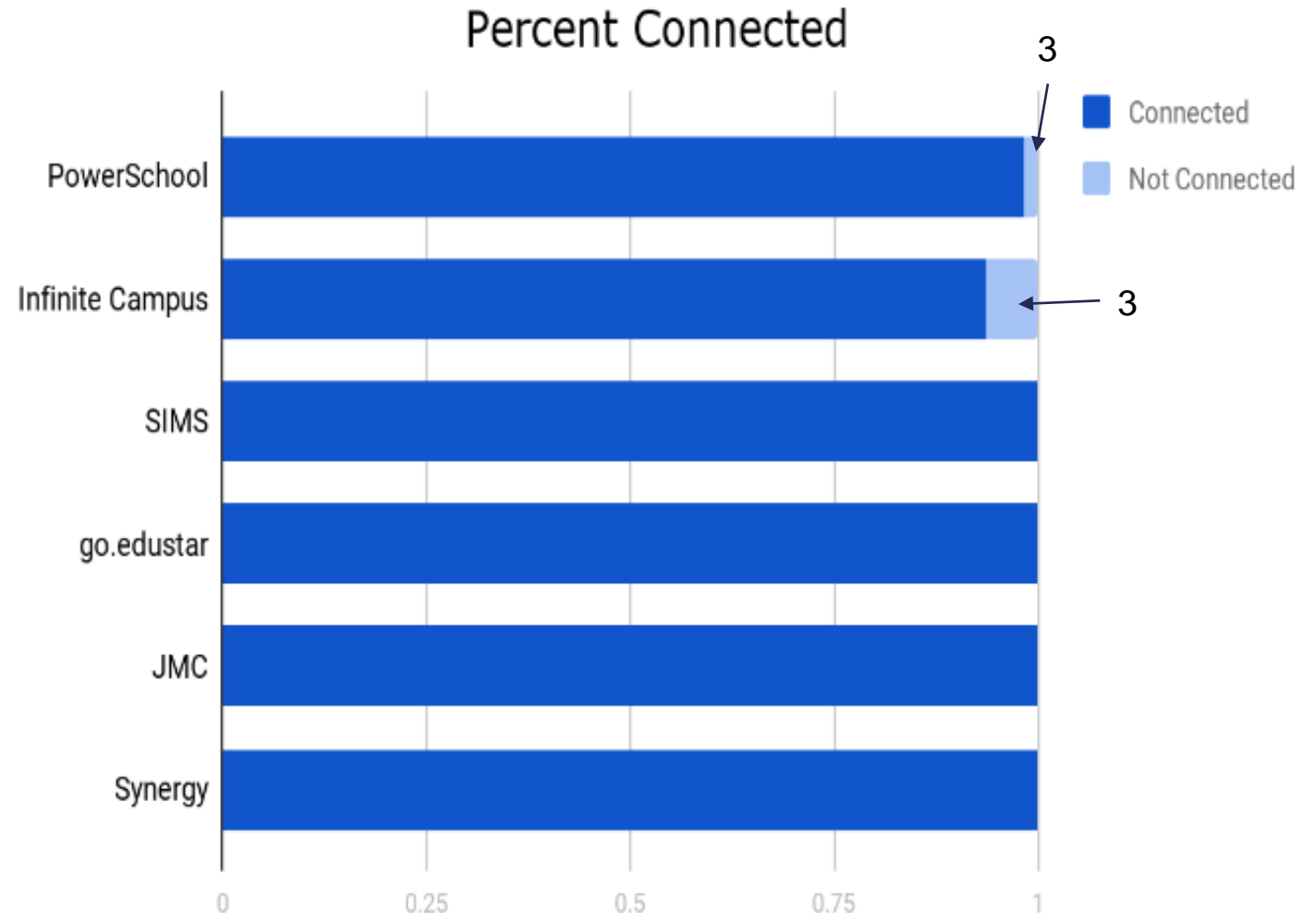




ADVISER Current Status

238 Districts have connected to the 2017-2018 ODS.

On April 2, 2.8 million API requests were made to the ODS. The average is around 2 million requests per day.

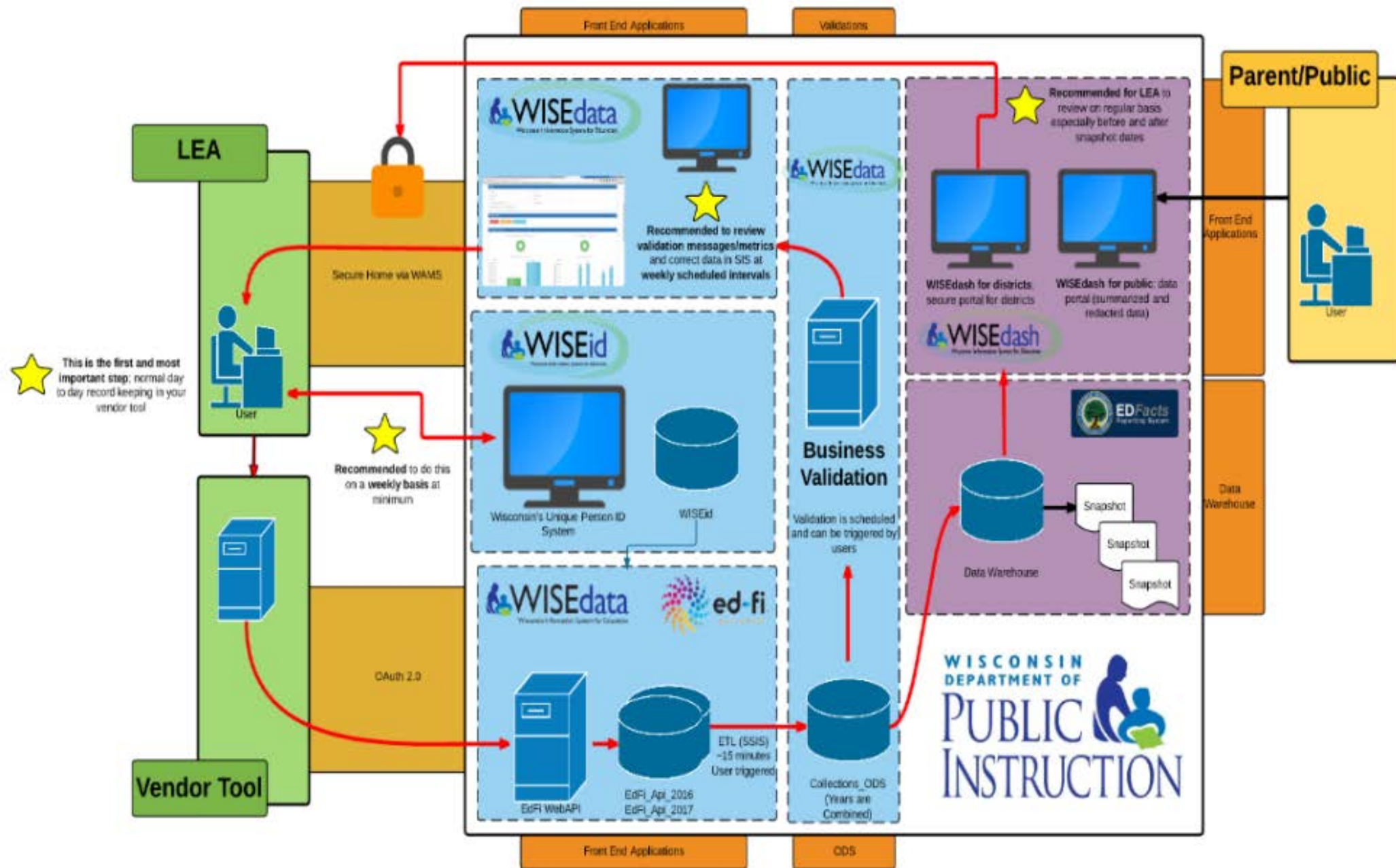


Future

Wisconsin's Interoperability Story

- 242 Districts
- 2,217 Schools
- 60,649 Teachers
- 860,138 Students





Wisconsin's Implementation Story

- Initial Goal: 1 statewide SIS & Ed-Fi integration but had to allow each school/district to select their own SIS vendor
 - Pro: All schools have freedom to choose preferred vendor
 - Con: Difficult to manage data flow and training with different vendors
- Selected Ed-Fi data elements and created WI extensions that integrate to cover submission/reporting needs
- Display data to users in our own WISEdata app, which integrates with WISEid and WISEdash
- Validations, exports, metrics, training materials to help users improve data quality

Challenges, Room to Improve

- Difficult to support schools when we don't know the layout/functions of their specific SIS
- Busy district staff hard to train, reach, convince of importance for continuous review & work in app
- Great potential to share data among other state agencies and third party systems but slow for approval and implementation

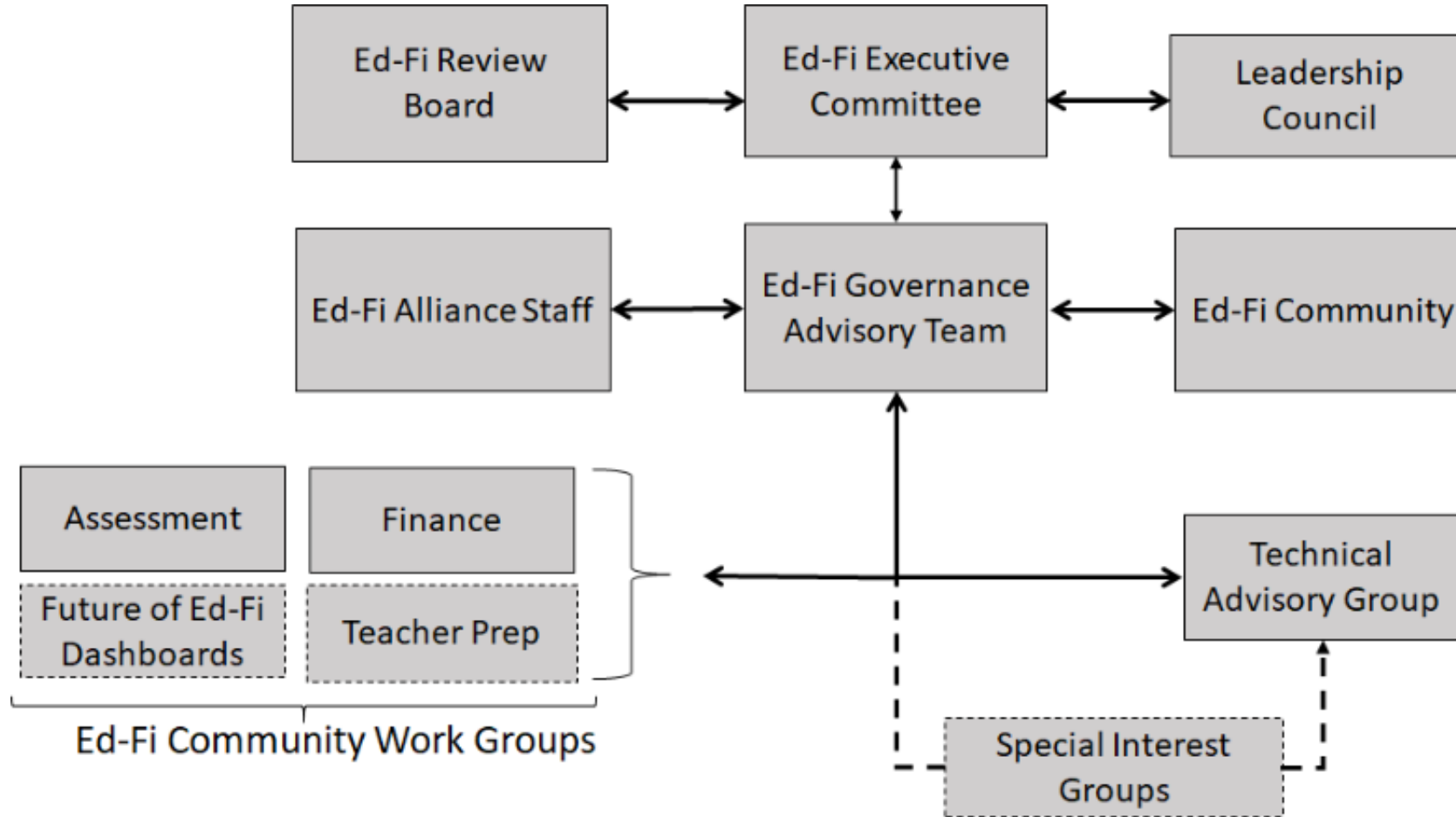
What's Working Well in WI

- Timely dataflow, near-real time results in WISEdata Portal
- Validations (rules/logic) to check data quality
- Error & warning KBAs provide guidance on resolution, link directly to validations displayed in WISEdata
- Data Elements webpages give codes, details, FAQs & link directly to displayed values in WISEdata for easy help
- WISEdash data dashboards refresh nightly, ensure we receive consistent data quality across state to drive decision making
- Resources to help train & answer user questions
 - User Group webinars, Uncommon Student docs, Google+ community, E-learning courses, layered support for help tickets

Future Interoperability Plans

- Internal integration
 - Career Education
 - Homelessness, Migrant, Immigrant Title III
 - Military Connections
 - Finance Project (new app to replace finance reports 2019-20)
- Third Party System integration, e.g., Xello
- Other WI dept. integration
 - DHS
 - DCFS

Ed-Fi Governance



Want more?



INTERACTIVE WEBINAR

**Ask & You Shall Receive:
Tools to Facilitate
Interoperability Requests**

Host: Caroline Kazmierski

Friday, August 17, 2018 1:00 pm CT



Summit 2018

October 9-12
Register at Ed-Fi.org

